

KNIGHT 11th Century

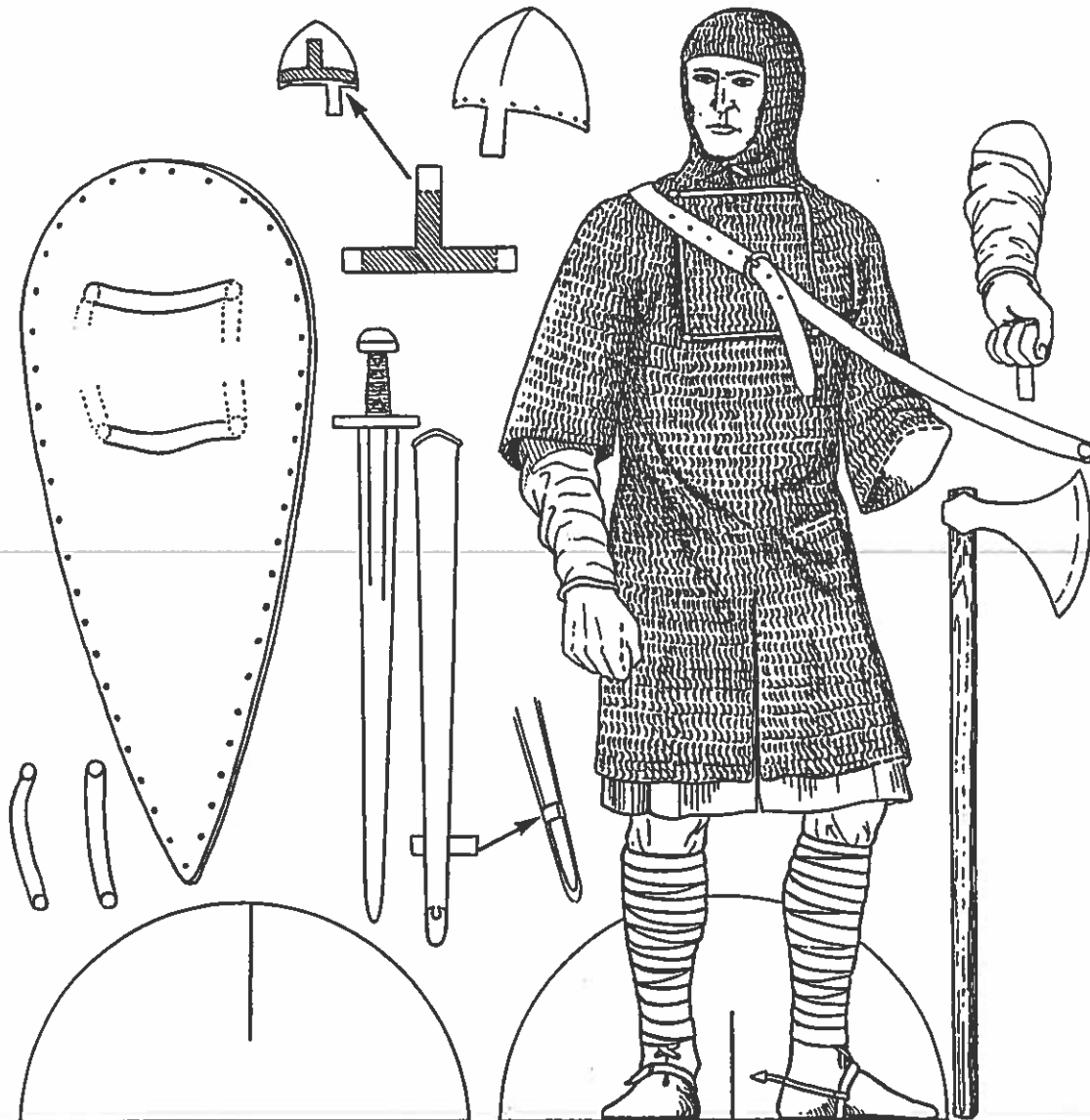
K1

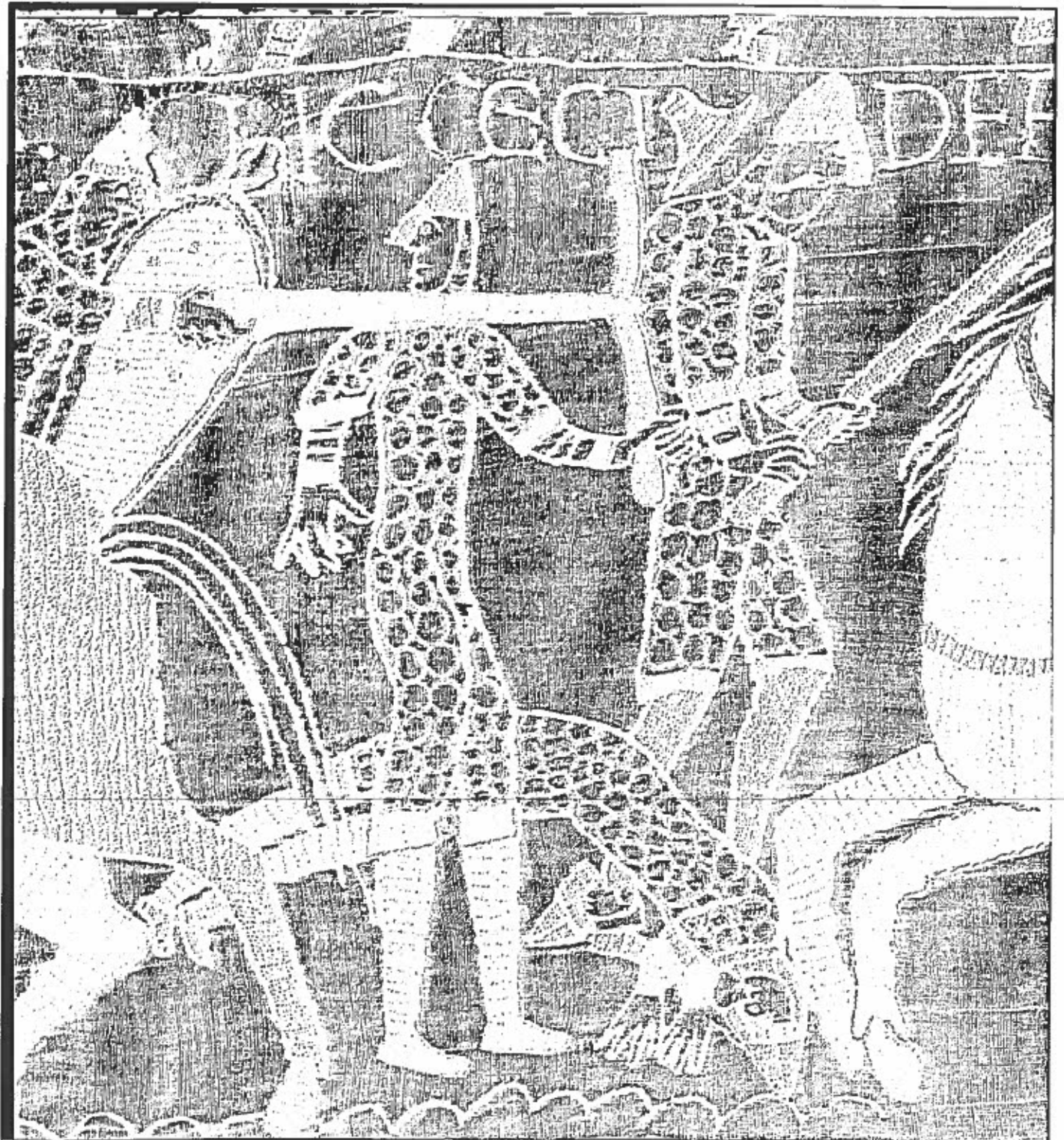
Colouring Instructions

Mall; grey
Undershirt: tomato red
Leggings: fawn with brown bindings
Shoes: black or brown with grey spurs and red straps
Helmet, sword and axe blade; grey
Axe shaft: light brown
Scabbard and belts; blue, red or light brown
Shield and straps: brown

Assembly Instructions

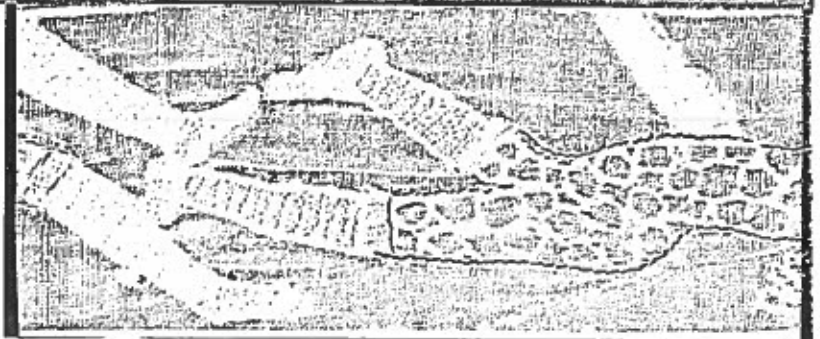
Cut out all pieces and then carefully slot left sleeve and left side of skirt.
Stick tabs on sword scabbard then slide this with the sword behind it into position.
Push left arm into slot and glue at back.
Glue straps to shield and slide onto left arm turning tab on hand back onto front strap
and glue long shoulder belt onto upper front rivet on shield.
Stick helmet support in place and place helmet on head.
Slot right hand and pass axe handle through.
Slot base and crosspiece and push one into the other to make knight stand.





Eleventh-Century Armor
Bayeux Tapestry (c. 1080)

*Cambridge Illustrated Atlas: Warfare
in the Middle Ages, 768-1487.* By
Nicholas Hooper and Matthew Bennett.
Cambridge, England: Cambridge
University Press, 1996. P. 40.



KNIGHT 12th Century

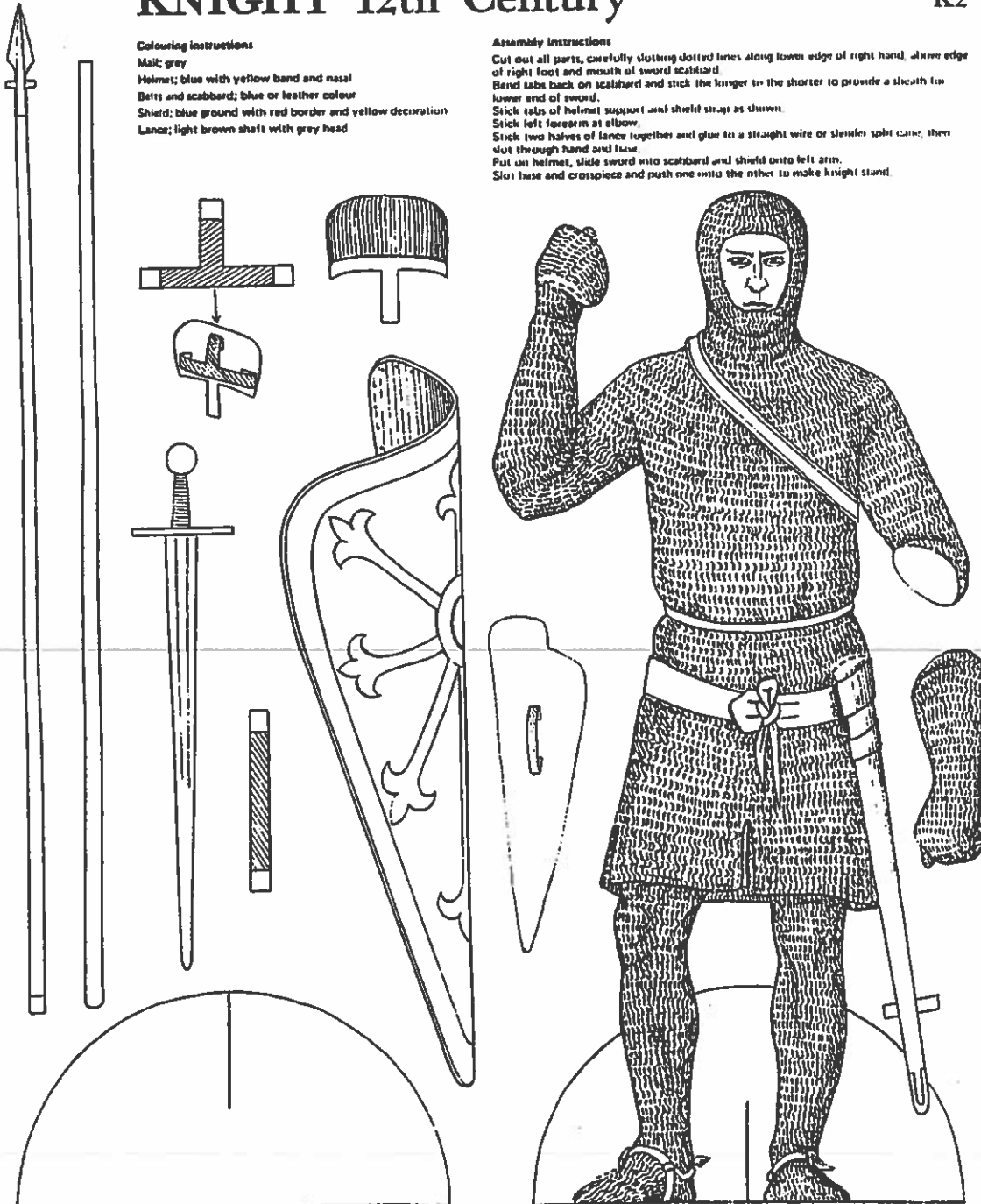
K2

Colouring instructions

Mit: grey
 Helmet: blue with yellow band and nasal
 Belt and scabbard: blue or leather colour
 Shield: blue ground with red border and yellow decoration
 Lance: light brown shaft with grey head

Assembly instructions

Cut out all parts, carefully slotting dotted lines along lower edge of right hand, lower edge of right foot and mouth of sword scabbard.
 Bend tabs back on scabbard and stick the longer to the shorter to provide a sheath for lower end of sword.
 Stick tabs of helmet support and shield straps as shown.
 Stick left forearm at elbow.
 Stick two halves of lance together and glue to a straight wire or slender split cane, then slot through hand and base.
 Put on helmet, slide sword into scabbard and shield onto left arm.
 Slot base and crosspiece and push one into the other to make knight stand.

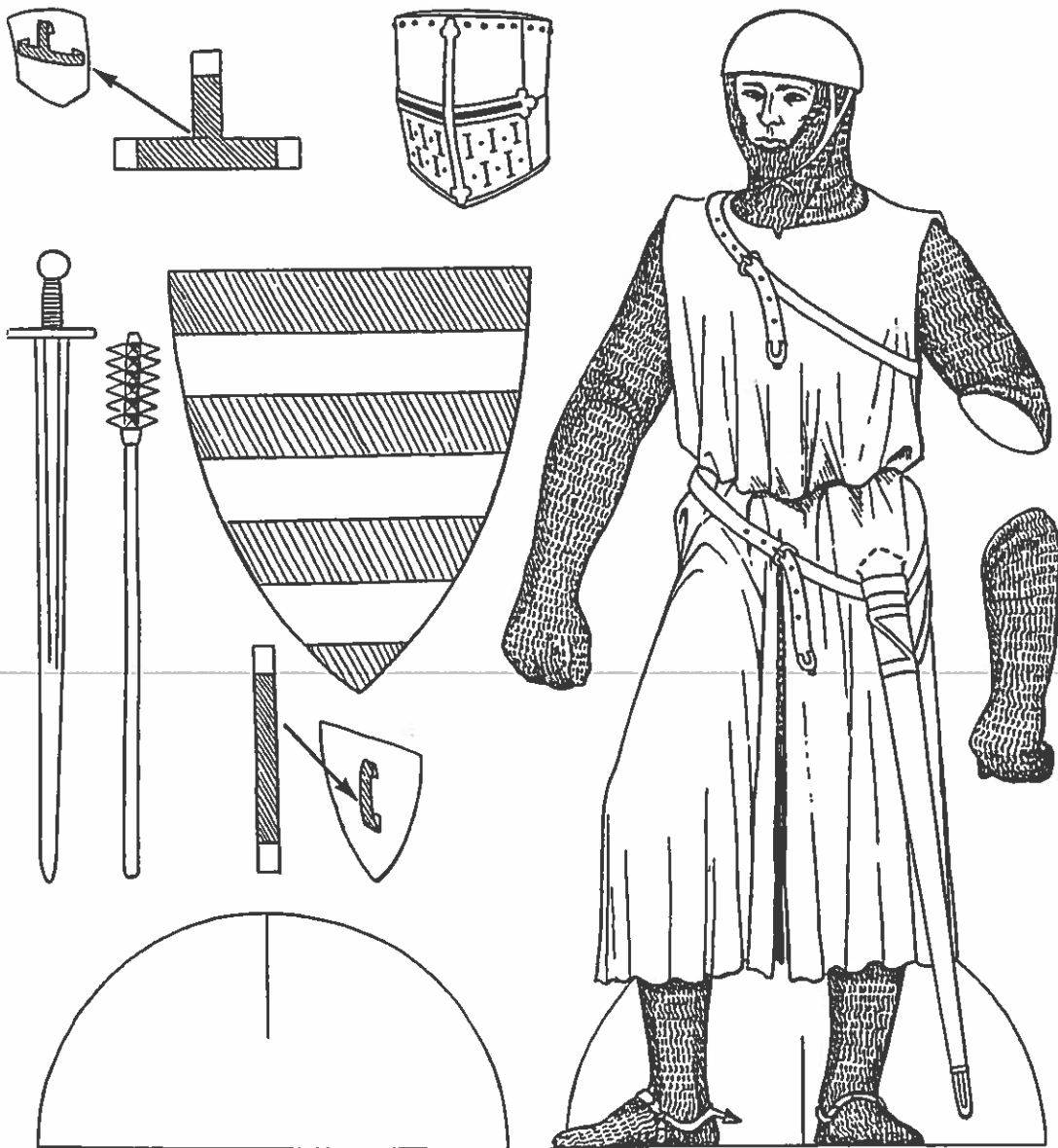


Colouring instructions

Armour, grey
Gown, red, blue or green
Belts and scabbard, light brown
Helmets can be yellow
Mace, handle brown, head grey
Shield, blue and yellow stripes

Assembly instructions

Cut out all parts and carefully slot right hand between thumb and forefinger and scabbard mouth where dotted.
Put sword in sheath and stick left forearm at elbow.
Stick helmet support and shield strap by tabs as indicated.
Put on helmet, slide mace in right hand and shield on left arm.
Slot base and crosspiece and push one into the other to make knight stand.



KNIGHT about 1300

K4

Colouring instructions

Mail: grey. Helm: grey. Gown: green
 Quilted undercoat and thigh defences: light brown or fawn
 Scabbard and belts: red
 Spurs: yellow. Straps: red
 Lance shaft: brown
 Arms on shield and shoulder-pieces; can be any colour with
 lion in yellow or white. If lion is a colour, i.e. black, red, green,
 background must be yellow or white.

Assembly instructions

Cut out all pieces and then carefully slot sword belt to slide sword through as shown at side of figure. Dotted lines are to be cut as shown by thick lines in diagram.
 Slot right thumb and base to hold lance.
 Stick on left arm and shoulder-pieces.
 Stick on helmet support and shield strap.
 Stick two halves of lance together and mount upon a straight piece of wire with Sellotape or a slender split gardeners' cane glued to the back.
 Slot base and crosspiece and slide one into the other to make knight stand.

